



REPRODUCTIVE AGING IS PREVENTABLE

Find Out How

THE PRINCIPLE BEHIND THE NoPauze PROCEDURE

Females are born
with 1 million eggs
called primordial
follicles

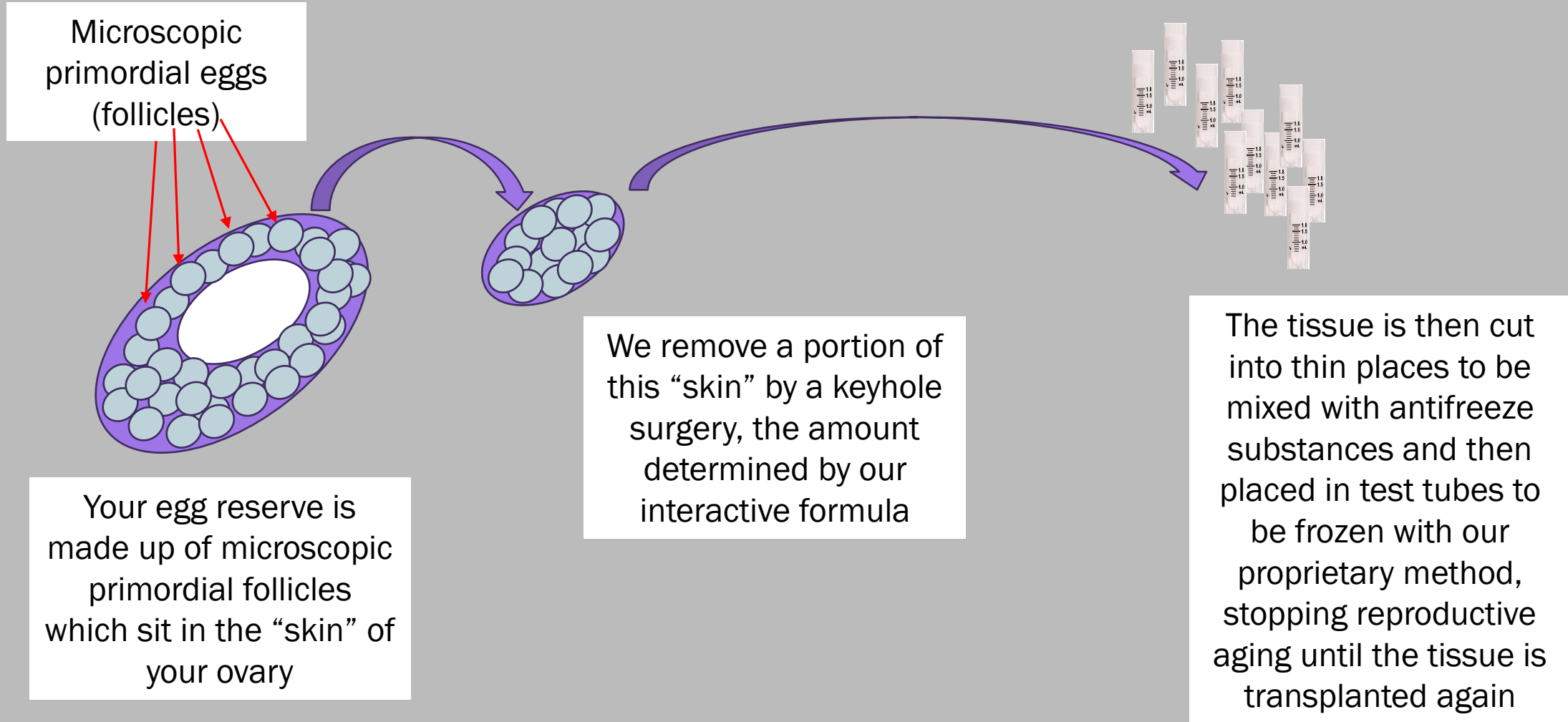
Women ovulate about
500 of those eggs in
their entire
reproductive life

Yet they run out of
this egg reserve by
about age 51 and
then menopause
happens

This means 99.9% of
the eggs are wasted

NoPauze procedure
taps into those
99.9%, preserving
them before they are
wasted

How Does NoPauze Procedure Work?



We will monitor your hormones with a urine test and tell when menopause is near

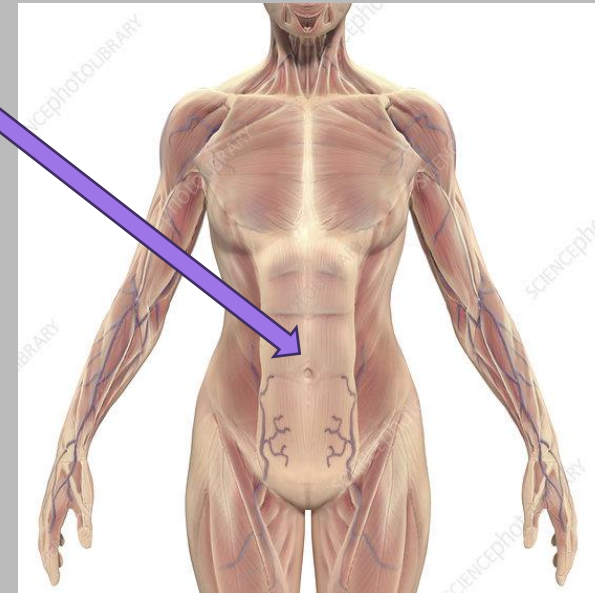
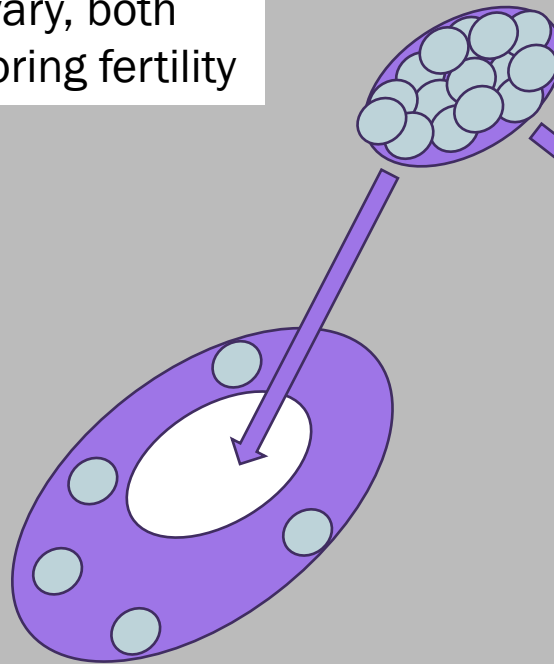
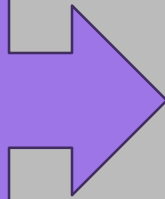


Then the tissues will be thawed and reconstructed and the transplanted with our proprietary surgical techniques

If you desire fertility, the tissues are transplanted back to your ovary, both reversing menopause and restoring fertility

If you desire only to delay menopause, the tissues are transplanted under your abdominal skin with iv sedation, in the office

Peri-menopausal
ovary with
very few
eggs
remaining



Based on biological data and AI calculations, the procedure is predicted to delay menopause 10 years for most women younger than 40 years of age: test it for yourself with our online simulator on the home page

We Are Pioneers In The Field

- We are the leaders in the industry, developing and performing the World's first ovarian tissue transplantation that reversed menopause in 1999 (*Oktaý et al New England Journal of Medicine 2000*)
- As a result, we have the longest experience with the technology
- Since 1999, we continuously improved the ovarian tissue freezing and transplantation techniques
- This resulted in the highest success rates in the world (*Oktaý et al Fertility Sterility 2022*)

**OUR FOUNDER AND
MEDICAL DIRECTOR
KUTLUK OKTAY, MD,
PHD, FACOG**

He is the world's most respected and recognized expert in fertility preservation including ovarian tissue freezing and transplantation

Dr. Oktay is the inventor of numerous fertility preservation procedures

He is also a renowned ovarian biologist, enabling him to continue to develop and improve techniques to delay reproductive aging

Dr. Oktay's textbook on ovarian tissue freezing and transplantation is the most authoritative resource in the field.

See Dr. Oktay's full bio on our home page:
www.nopauze.com or www.fertilitypreservation.org

How Can I Get the NoPause Procedure?

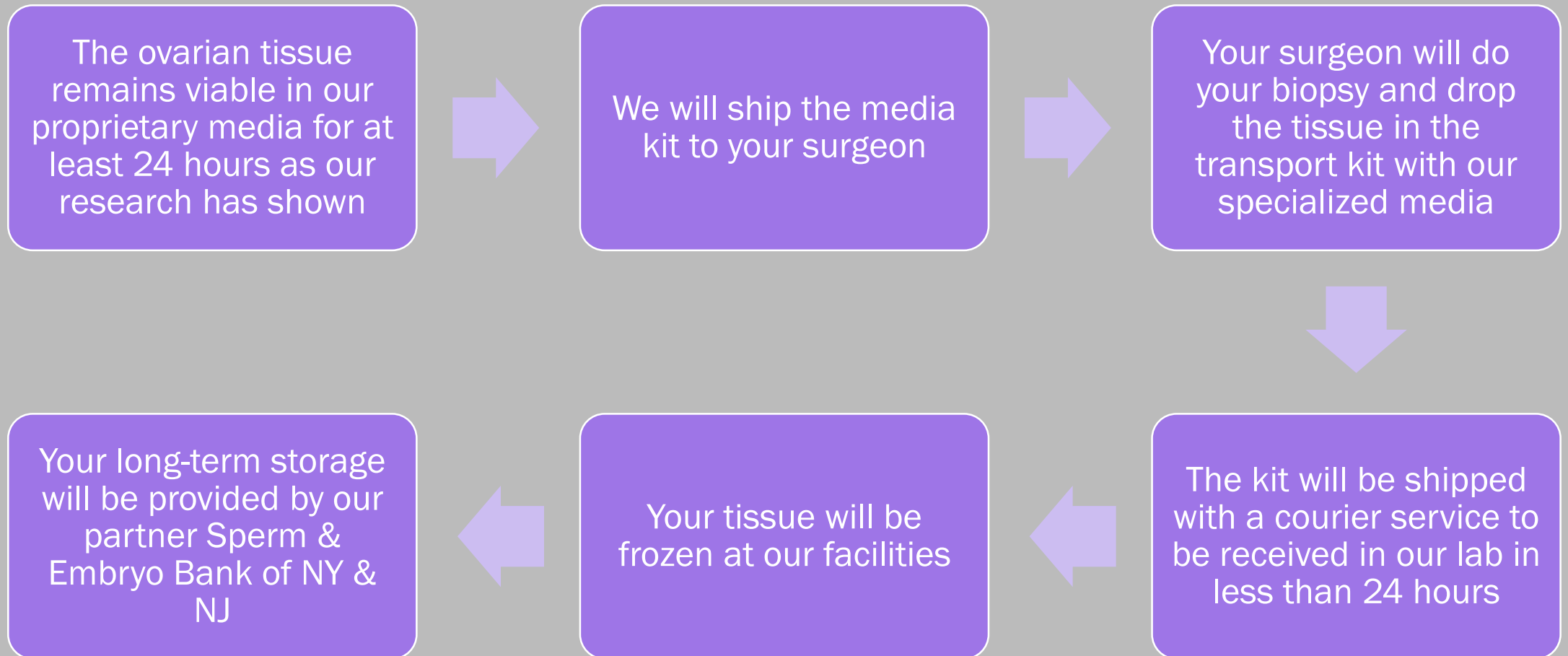
- There are two ways you can have the procedure done, based on your preference:

1. Ovarian tissue harvesting is carried out by Kutluk Oktay, MD, PhD by an outpatient laparoscopic procedure at Yale New Haven Hospital or NYU Long Island Hospital and the tissue is frozen in our lab

2. The tissue can be removed locally, either as a separate procedure, or during a planned OBGYN surgery such as a C-section, tubal ligation, or endometriosis surgery:

- In that case we will send your surgeon our proprietary transport kit which keeps the tissues alive for at least 24 hours and instruct her/him/they on how to collect the tissue
- After the biopsy, your surgeon will drop the tissue in our specialized solution, and it will be express shipped to our lab for freezing

How Does Tissue Transport Work?



Commonly Asked Questions

- **Does removing part of my ovary make me enter menopause earlier?**
 - Based on previous studies, removing part or whole of an ovary at an adult age can result in 1-3 years earlier menopause depending on the age at removal
 - However, when the ovarian tissue is frozen at a younger adult age and later transplanted just before menopause, the frozen tissue more than makes up for it.
 - See your benefit with our online simulator through our home page:
www.fertilitypreservation.org or
www.nopauze.com

Commonly Asked Questions

- **How is my ovarian tissue harvested?**
 - Ovarian tissue is harvested with a keyhole surgery using a maximum of 3 incisions less than $\frac{1}{4}$ inch. Depending on our formula calculations, 50% or more of an ovarian cortex is peeled off laparoscopically
 - Incisions are hidden in the belly button and below the bikini line, invisible absorbable sutures are used for closure
 - The procedure is performed under general anesthesia as an outpatient surgery and typically lasts about an hour
 - After a 1–2-hour recovery period, you are discharged home